



WELCOME TO  
**FermionX**

---

MANUFACTURING



# ABOUT US

Our 50 years' experience ranges from PCBA and sub assemblies, to fully integrated box build, test and shipping fulfilment.

We bring together a wealth of skills for the world of product manufacturing, supporting our partners with their production growth ambitions.



# MEET THE TEAM



## Gary Rice

As Technical Sales Manager, my role is to assist you with all of your technical onboarding requirements



## Scott Jones

My role as Business Development Manager is to liaise directly with you regarding all aspects of your journey with us



# NEW FOR 2024

In order to further enhance our capabilities and production growth for our customers, we are proud to announce that we are now **ISO 13485** certified.

By updating our premises as well as our software systems, our certification assures you of the highest quality standards. Reducing product risks, improving traceability and ensuring safe and effective products that can be relied on in critical environments.



**01.**

## **OPTIMISING YOUR PRODUCTION**

*We can provide the manufacturing support needed to help grow your production*

**02.**

## **DELIVERING QUALITY**

*We are committed to the highest standards of system and process controls*

**03.**

## **WORKING WITH YOU**

*Our open communication with customers ensures that your journey with us is built to last*

**04.**

## **NEXT STEPS**

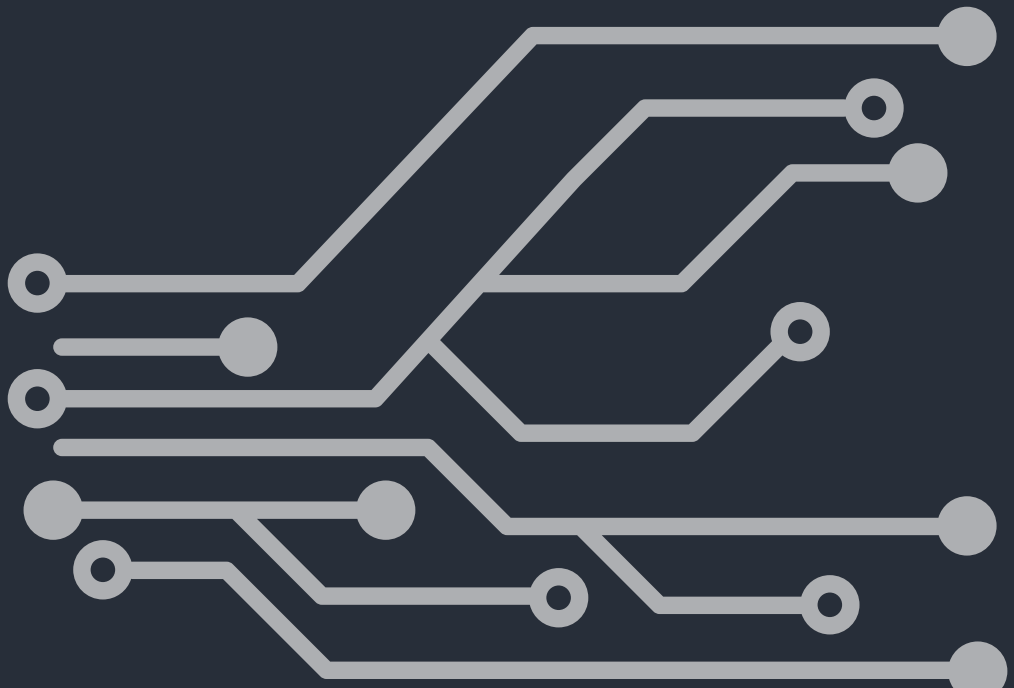
*What's next? Where to find any additional information and who to contact.*





01.

# OPTIMISING YOUR PRODUCTION





# PCB ASSEMBLY

FermionX has an extensive PCB assembly service capability which allows us to successfully support from basic to the most complex circuit design, tailored to suit your requirements.

- Surface mount assembly
- Conventional PCB assembly
- Sub-assemblies
- Quality control
- Full inspection and test





# BOX BUILD ASSEMBLY

Our box build service provides bespoke solutions to fit your needs. From simple PCB and cable-fitted sub-assemblies, to integrated enclosures with electromechanical assembly.

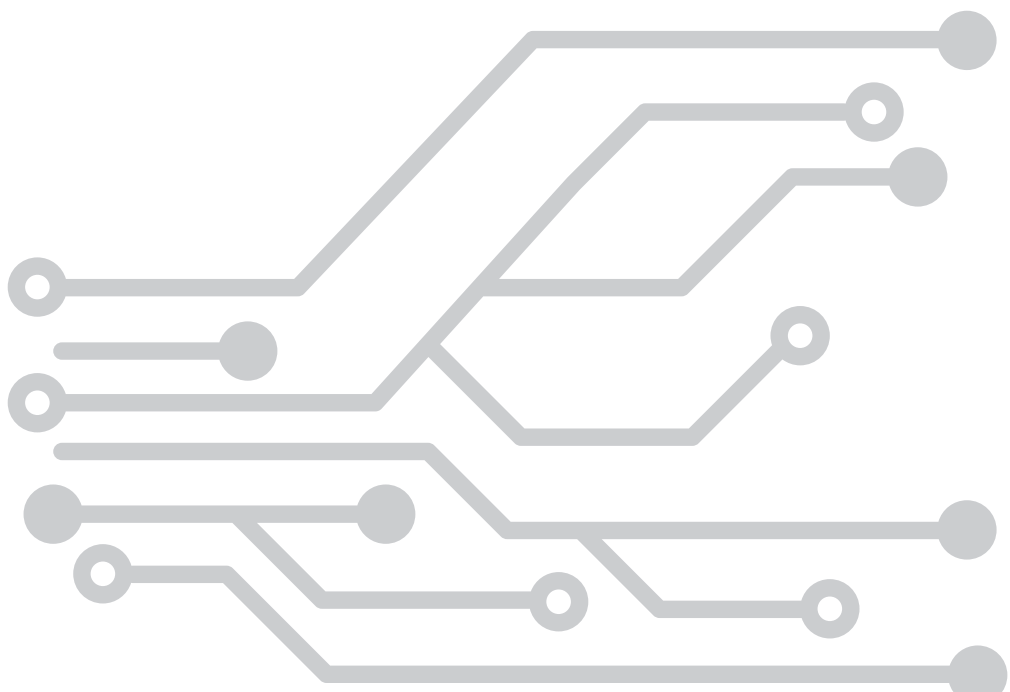
- Review of all documentation
- Testing/programming specifications
- Traceability requirements
- We can also support on product branding and packaging to fit global distribution requirements





# INDUSTRIES

No matter what industry you operate in, our extensive experience and state-of-the-art facilities can support your production.



**AUTOMOTIVE**



**MEDICAL**



**AVIATION**



**OIL AND GAS**



**LIGHTING**



**MARINE**



**AUDIO**



**DETECTION**



**MILITARY**



# PLANT LIST

## SURFACE MOUNT - 3 LINES:

- Speed Print SZ-Z10AVI
- DEX Horizon - 03ix
- 4 x I-Pulse (3 I-Pulse M20, 1 x I-Pulse M10)
- IBL Vapour Phase
- 2 x Lemme Plus 14
- Interflux Solder Paste Conditioner
- Memmert Oven

## CONFORMAL COATING:

- PVA2000 Selective Coating System
- Hand-held DCA200H in a clean extracted booth

## CONVENTIONAL:

- Ecosselect-1 selective soldering system
- Robottas Mascott
- Component Pre-Forming
- Cropmatic
- Easy cut nibbler
- Easy cut Depaneller
- Metcal MX5200
- Metcal handheld convention tool
- Metcal Bvx-200 Fume extraction
- Wave Solder

## INSPECTION:

- 4 x Mantis Elites
- ERSASCOPE M&M Plus
- AOI FX-940
- 2 x Inspex HD 1080p Cameras
- Nordson Dage Quadra 3 x-ray with x-plane

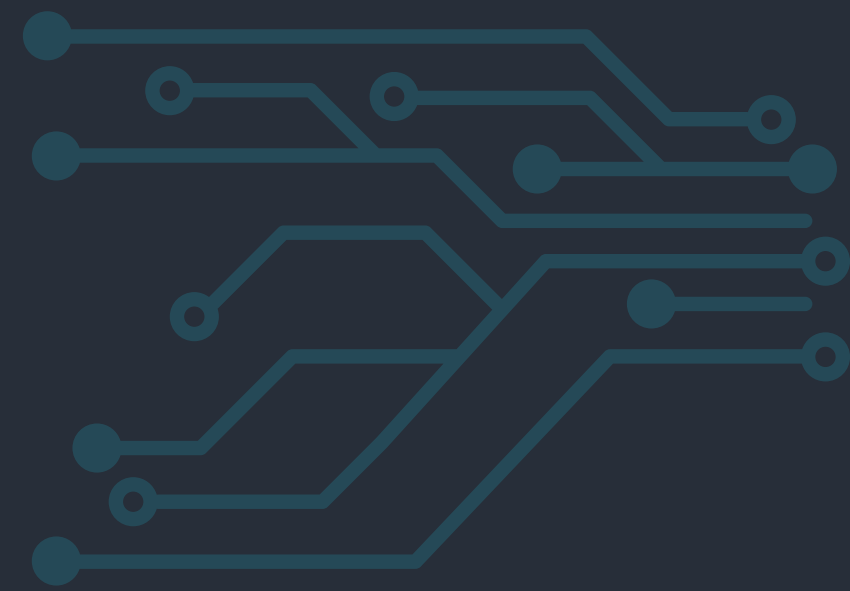
## MISC:

- BGA Rework station
- MARTIN mini oven O5
- X-Treme Dry Cabinets
- System 2000 Aqueous PCB cleaning machine
- Markforged Onyx Pro 3D Printer
- Super SWASH III Twingo





# AUDIO INDUSTRY CASE STUDY



## 01. THE COMPANY

*A UK-based audio electronics company that manufacture devices that create, manipulate and control sound. They focus on the creation of synthesiser modules that are sold all over the world and used by musicians, sound artists, sound production companies and more.*

## 02. OUR SOLUTION

*Our team made the customer aware of hold ups outside of our control. When odd failures occurred whilst applying a slight change to a module, our supportive team helped them to track down the problem. We additionally invested in selective solder to benefit the customer further.*

## 03. THE JOB

*As they are a small business, the customer wanted to find a local supplier who would accept their low manufacturing volumes while holding high-end machinery. Their products have components coming from across the globe, there is always a risk that problems could arise. Their product requirements involved SMT, conventional assembly, X-ray inspection and box build.*

## 04. OUTCOME

*We've been working together for 9 years and have built 510 PCBs for them in 2022, and 853 so far in 2023. 5 different products have been made to date. We hold stock for them so they can always get products out without delay. Our relationship continues to grow as they become increasingly satisfied with our capabilities.*

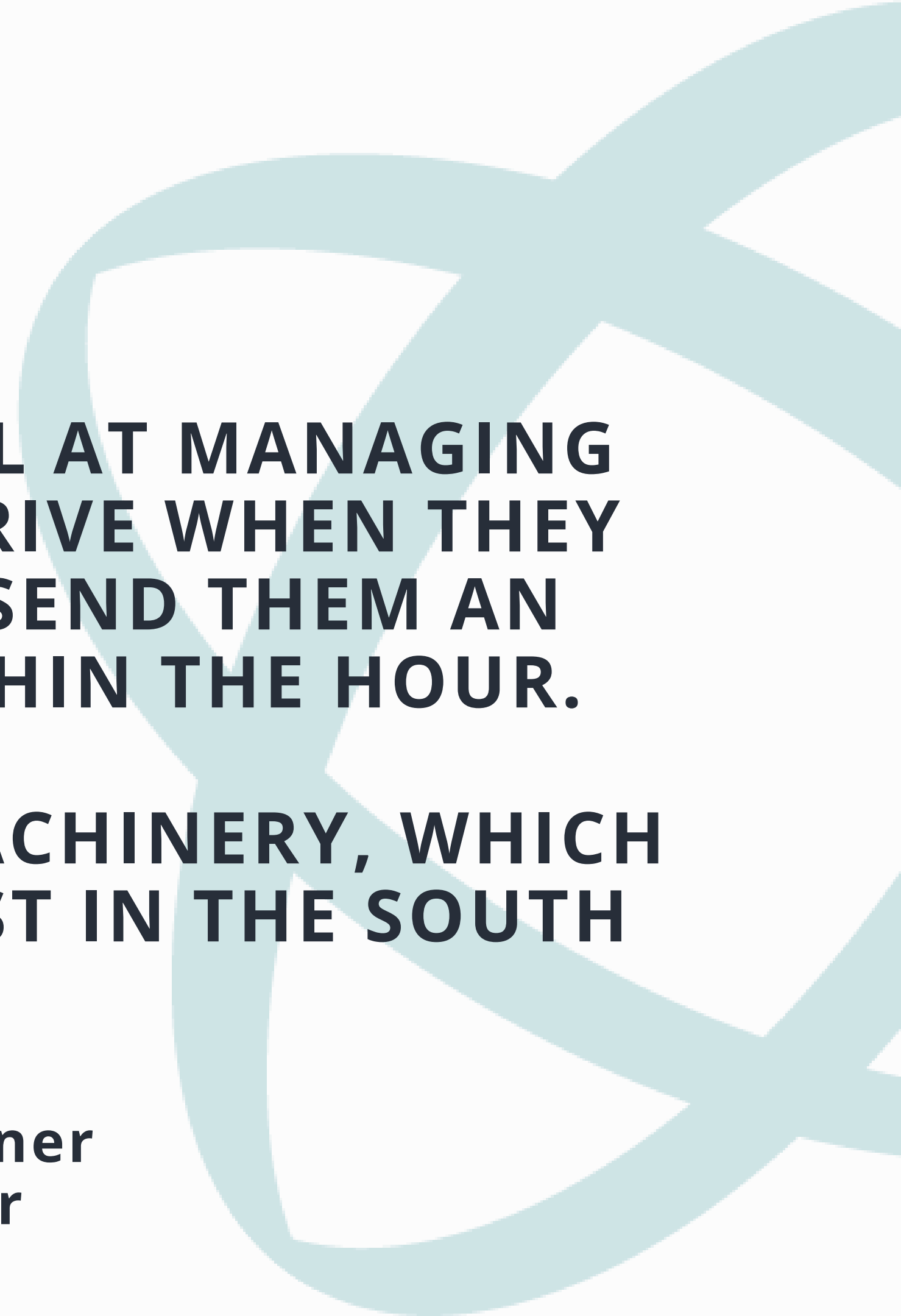
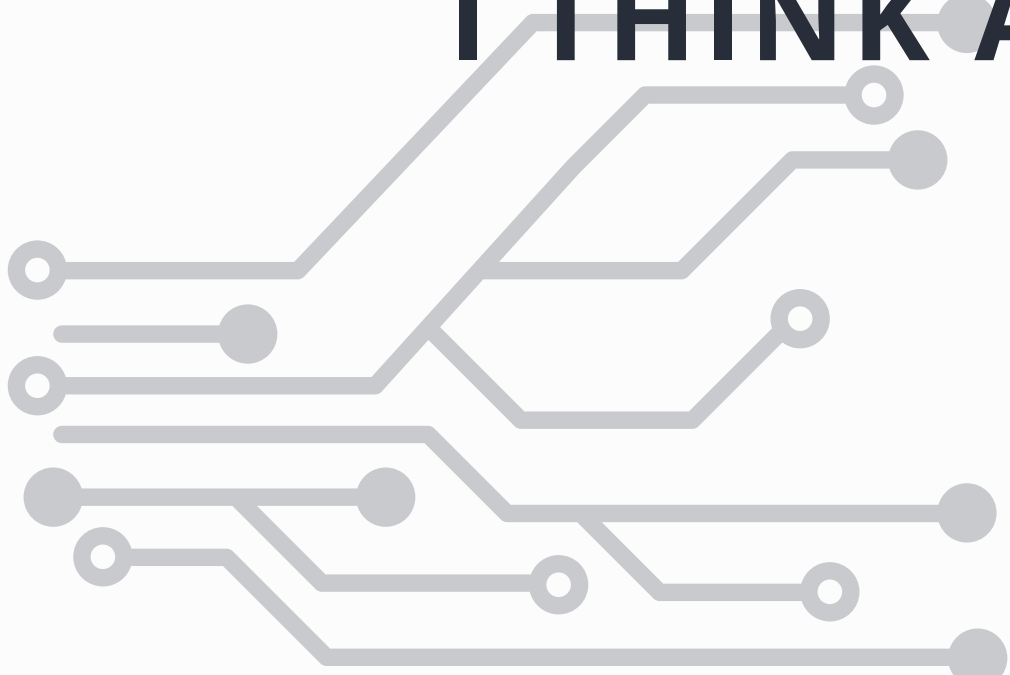




**"FERMIONX ARE EXCEPTIONAL AT MANAGING THEIR TIME. THINGS WILL ARRIVE WHEN THEY SAY THEY WILL ARRIVE. IF I SEND THEM AN EMAIL, I'LL GET A REPLY WITHIN THE HOUR.**

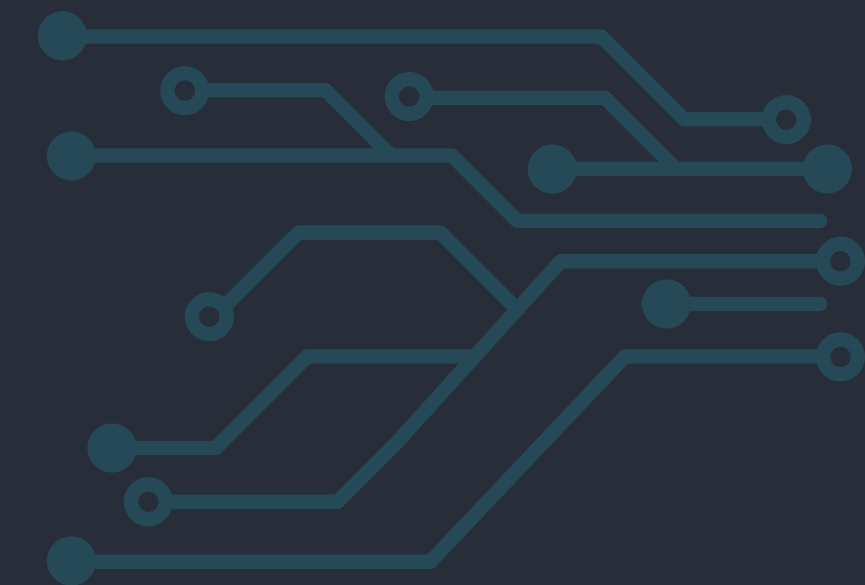
**THEY HAVE VERY HIGH-END MACHINERY, WHICH I THINK ARE SOME OF THE BEST IN THE SOUTH OF THE UK."**

**Audio Industry Partner  
Managing Director**





# BOX BUILD/FINAL ASSEMBLY CASE STUDY



## 01. SEWARD - PART OF THE FERMIONX GROUP

*At Seward we manufacture a range of award-winning laboratory paddle blenders. Our Stomacher® lab blenders deliver accurate, efficient results. They are globally referenced by thousands of protocols across a range of sectors and industries,*

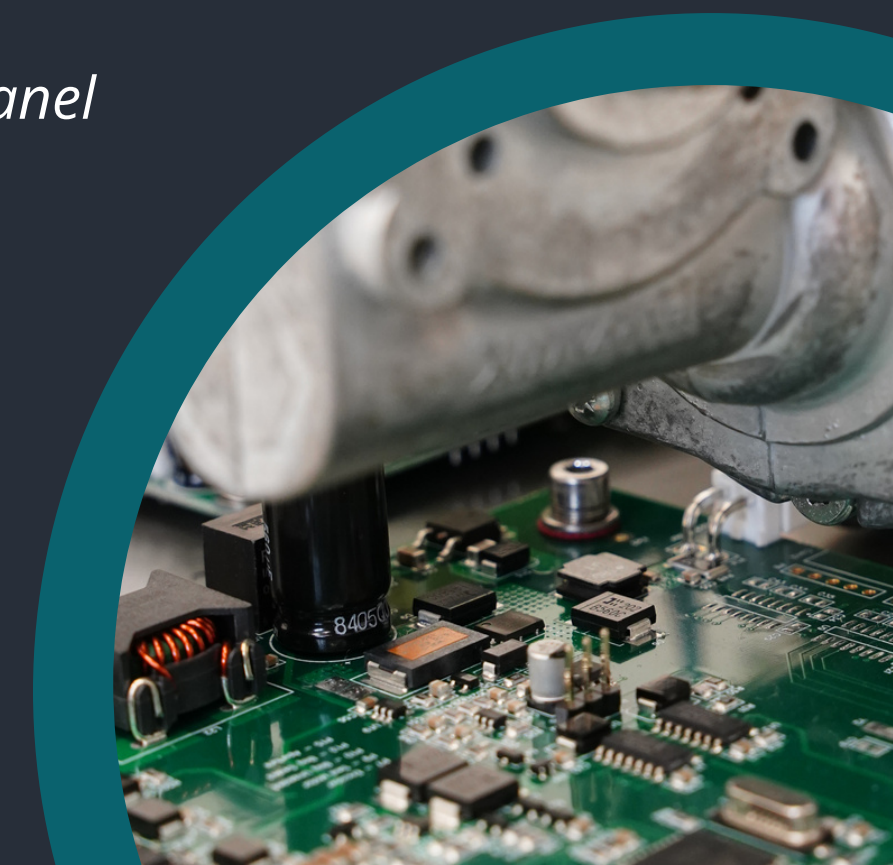
## 02. OUR PRODUCT

*The quality of our manufacturing provides laboratories with the right tools to deliver reliable, consistent, and accurate results. Our range of products offer a variety of functions, are built for continual everyday use and suited to most sample testing protocols, including:*

- *Programmable process times and paddle speeds for consistent results*
- *Easy to use – simple to set up, programmable operation with digital control panel*
- *Easy to clean with removable drip tray and paddles*
- *Anti-vibration technology reduces bench vibrations and operational noise*

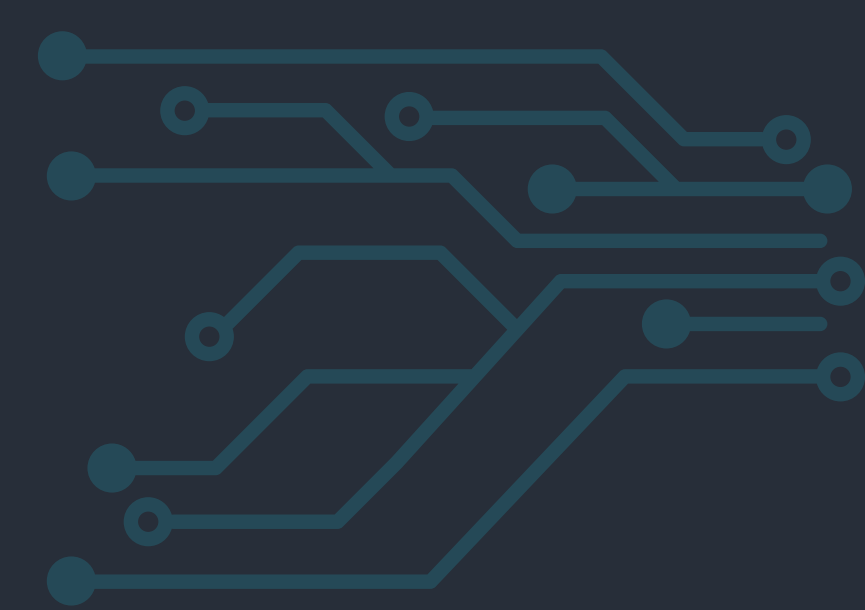
## 03. PROCESSES USED

- *PCB handling and mounting, including enacting ESD controls*
- *Mechanical assembly, from simple fastenings to complex multi-component systems*
- *Low volume cable/wire assembly*
- *Installation of customer software/firmware onto completed products*
- *Testing of completed products, if we're provided with a test specification*





# BOX BUILD/FINAL ASSEMBLY CASE STUDY



## 01. AIRBOX - PART OF THE FERMIONX GROUP

*At Airbox Sampling Products we manufacture a range of award-winning, robust air sample pumps. Utilising innovative data solutions, our Airbox pumps deliver trusted, proven results. As well as maintaining the highest standards of compliance.*

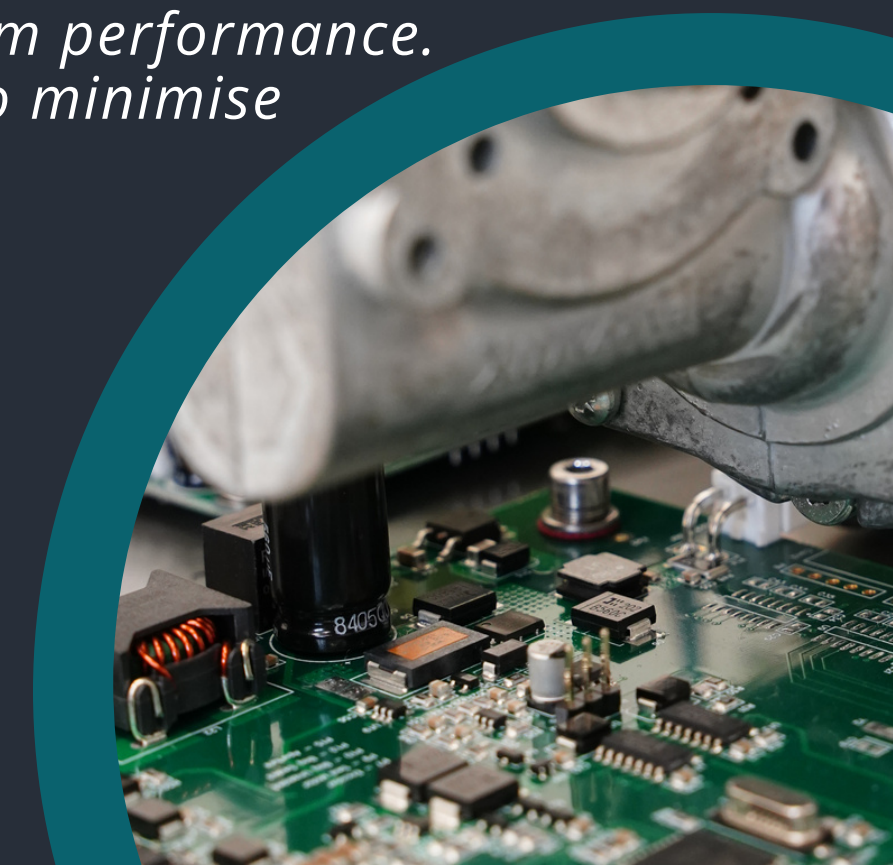
## 02. OUR PRODUCT

*Due to the hazardous conditions that our products are used in, we know what our customers value in their air sampling pumps.*

- We have designed and engineered every aspect. Our pumps are built with robust ABS foam casing for maximum strength and easy decontamination.*
- They're built with adjustable and fully calibrated flow rates for maximum performance.*
- All pumps have been designed to be easily maintained on and off site to minimise downtime*

## 03. PROCESSES USED

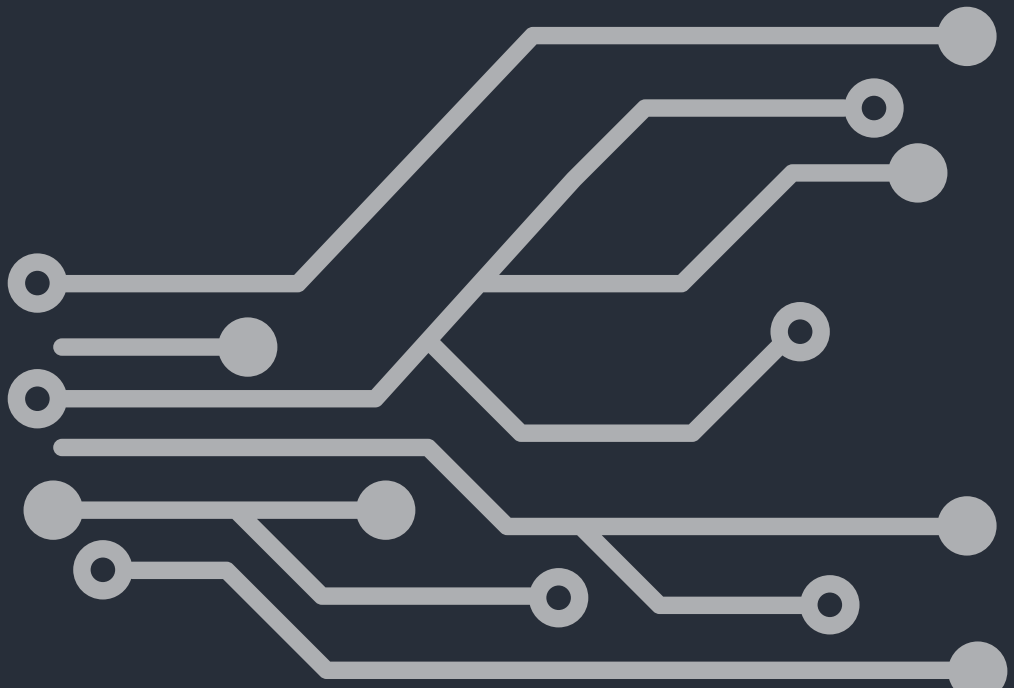
- PCB handling and mounting, including enacting ESD controls*
- Mechanical assembly, from simple fastenings to complex multi-component systems*
- Low volume cable/wire assembly*
- Installation of customer software/firmware onto completed products*
- Testing of completed products, if we're provided with a test specification*





02.

# DELIVERING QUALITY



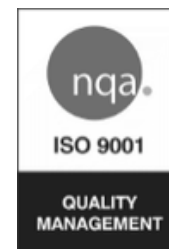
# MAINTAINING HIGH STANDARDS

We work proactively to identify, mitigate and resolve any risks to your production.

FermionX holds **ISO 13485**, **ISO 9001** and **IPC-A-610, J-STD-001** certification.

We also operate to the requirements of ISO 14001 for environmental management systems.

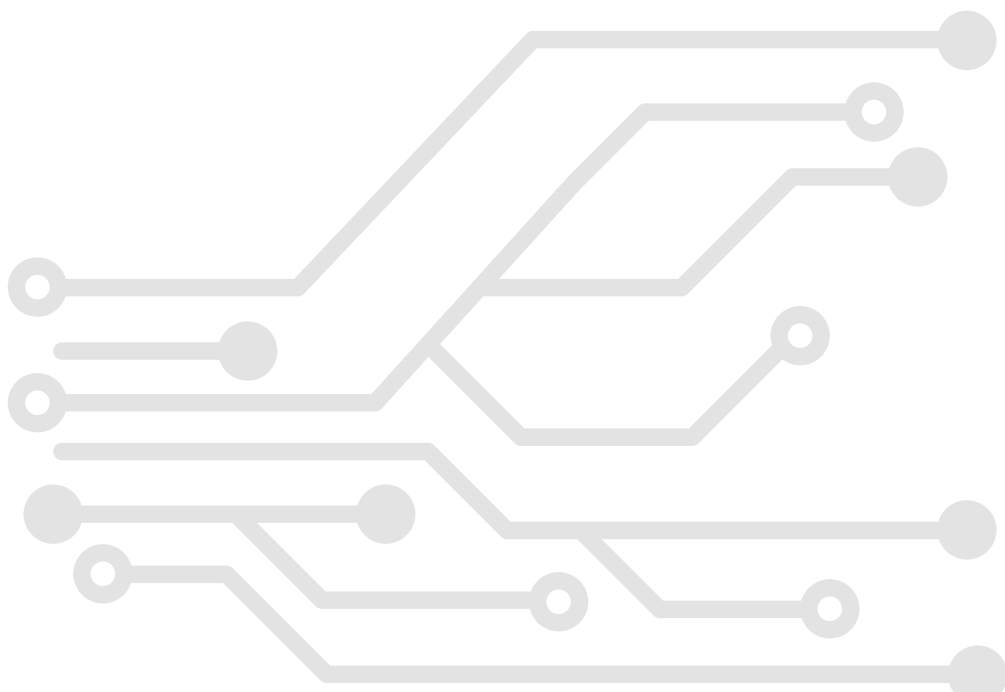
We have a rigorous culture of quality control through our process control systems and supplier partnerships.





# TRACEABILITY AND PLANNING

In order to achieve **ISO 13485** certification and improve our overall quality processes and traceability, we've invested in a new ERP/MRP system. This plans out production timelines and provides you with transparency in sourcing components and their origins.



# ENHANCED PRODUCT PROTECTION

We've also implemented stringent EPA protocols, including access control testing. ESD protection equipment and lab coats have been provided to all production staff. Air conditioning has been implemented to ensure that our factories are fully climate controlled.



# TRAINING

We have an internal IPC-A-610 and J-STD certified trainer for continuous training for our production staff.

We also offer ongoing training support for all of our team the chance to upskill or retrain in new areas and support career development.

# SUPPLY CHAIN

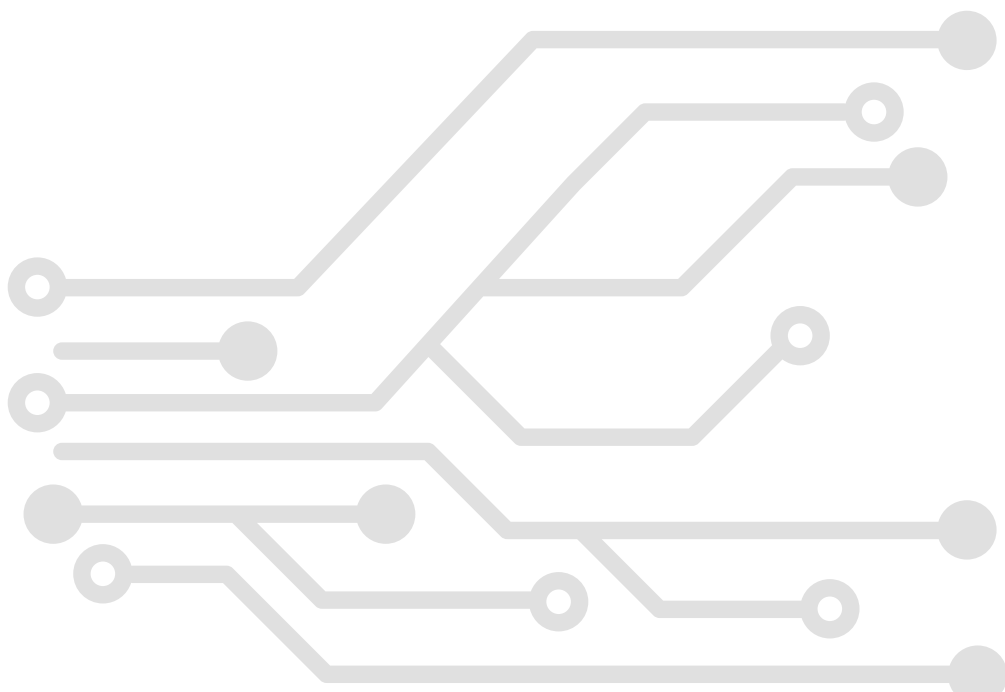
Our supply chain management experience and network of trusted suppliers ensures you receive technical advice as well as reliable products.

At FermionX we offer sourcing support when components become obsolete. If an end-of-life notice has an impact on your product(s) our team proactively source and provide you with a minimum of 1 alternative.



# CLEAR COMMUNICATION

We can track the status of your production from start to finish, providing you with real-time updates. As you will always be in the loop, you can trust that your production is on track.



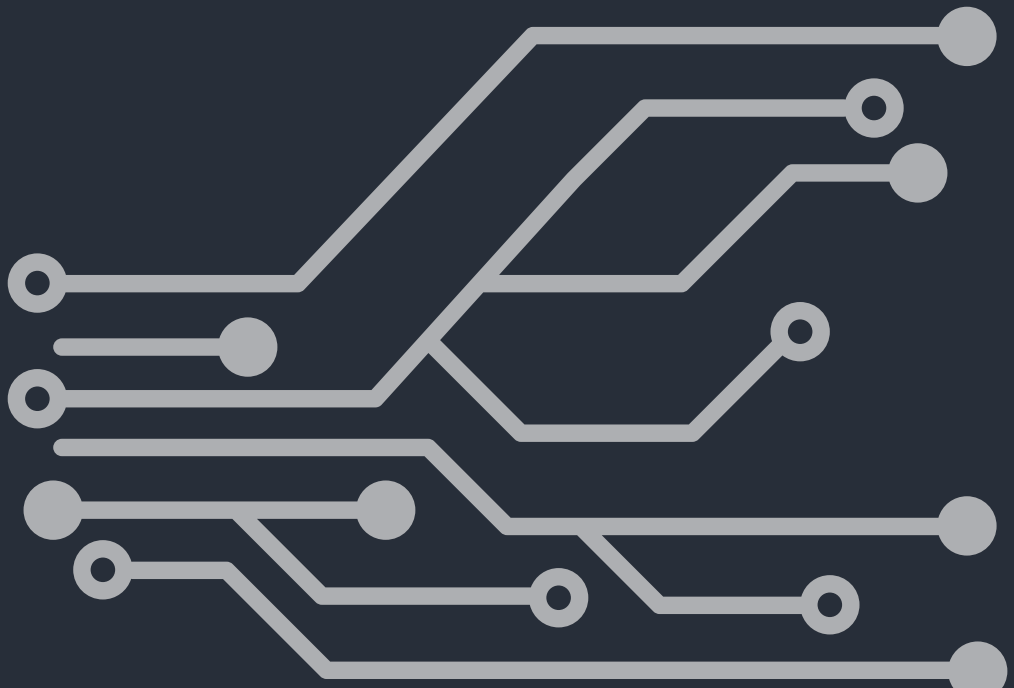
# INCREASED CONFIDENCE

Rest assured that you're working with a CEM that is dedicated towards continuous improvement and delivering high-quality products. By leaving the manufacturing expertise in our hands, customers can focus on their core competencies.



03.

# WORKING WITH YOU

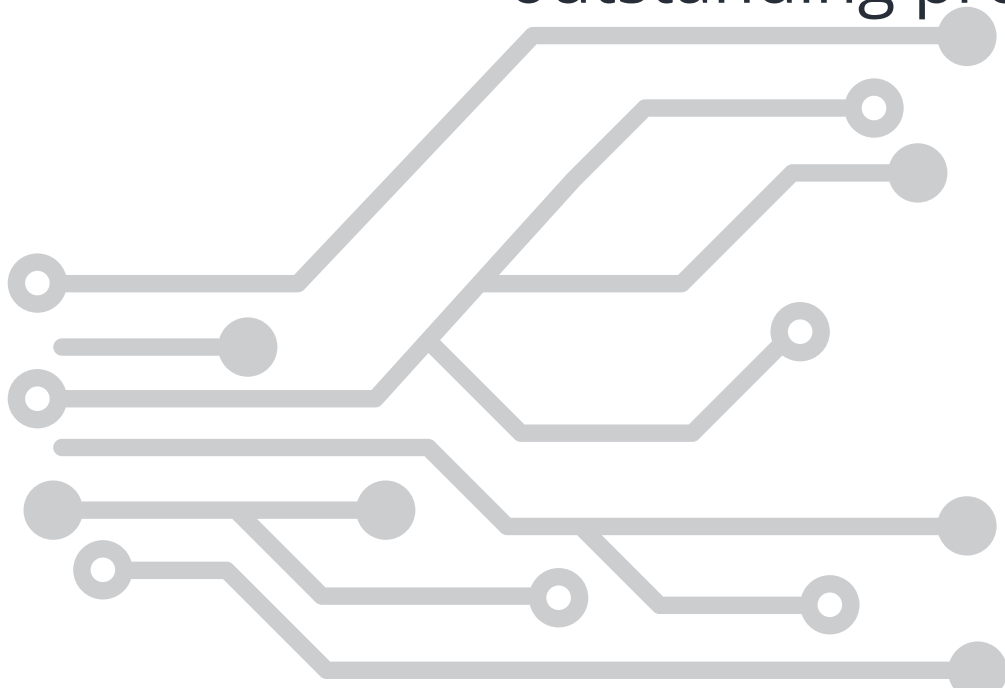




# OUR PROCESSES

Our transparent and open communication ensures that your journey from idea to finished product with us is streamlined with full control of your product.

We work proactively to identify and diminish risks to your production and supply chains, guaranteeing consistent outstanding product support.



1

### Request for quote

Your specification requirements and documentation will be set up on the system to be reviewed.

2

### Process Control Review

Data and documentation are reviewed to ensure completion and confirm the project's fit for manufacture.

3

### Supply chain management, costing and agreement

The cost and lead time of the job will be estimated via our network of trusted suppliers and quote sent for customer approval.

4

### Engineering and process control

Our Engineering Team will fully review the job to be signed off. After sign off, tooling and stencils will be ordered and production/ inspection packs released.

5

### Production

Once stores have received and kitted the components the job is programmed into the relevant machines and production will start.

6

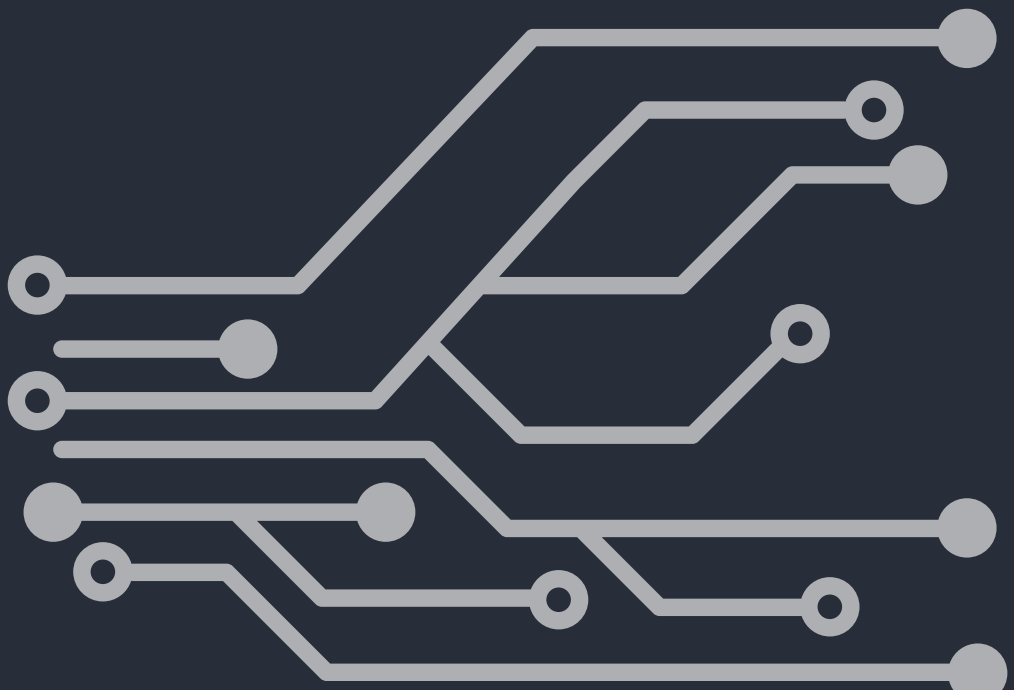
### Final product and shipping

Once the product has been approved it will make its way to the dispatch team who will arrange for delivery via our chosen network of trusted logistic partners / suppliers.



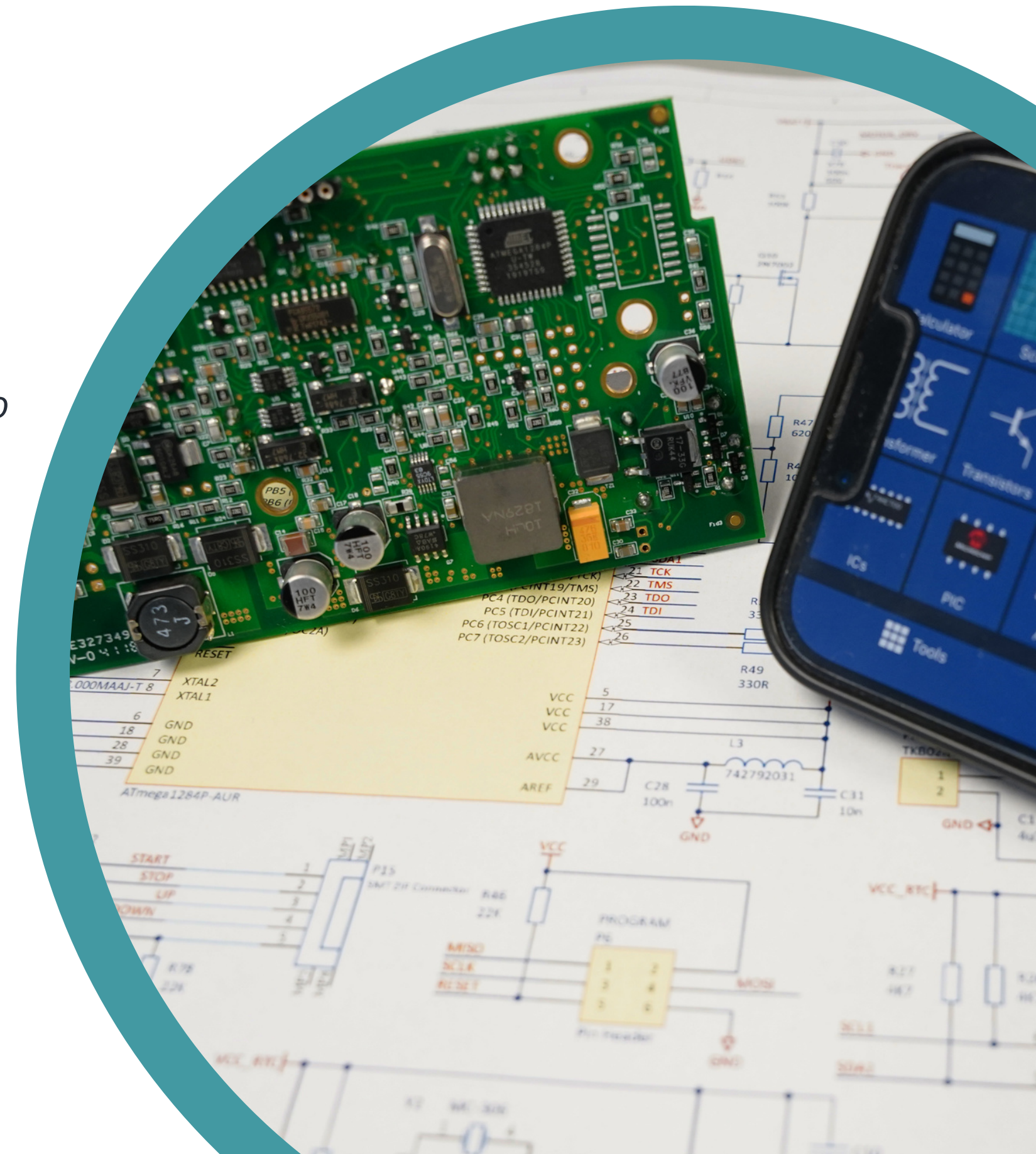
04.

**WHAT ARE THE  
NEXT STEPS?**



# Next steps

- 01. ARRANGE A MEETING**  
*We can catch up via teams - or if you'd prefer to meet in person, we'd be happy to welcome you here (with a light lunch) or come and visit you.*
- 02. SHARE TECHNICAL SPECS**  
*If you require an NDA, please feel free to send yours or we can share our standard agreement. Send over any technical queries or documentation that you would like reviewed by our team*
- 03. GET IN TOUCH**  
*We're happy to help and are on hand to support you with any questions you have.*







**THANK YOU**